

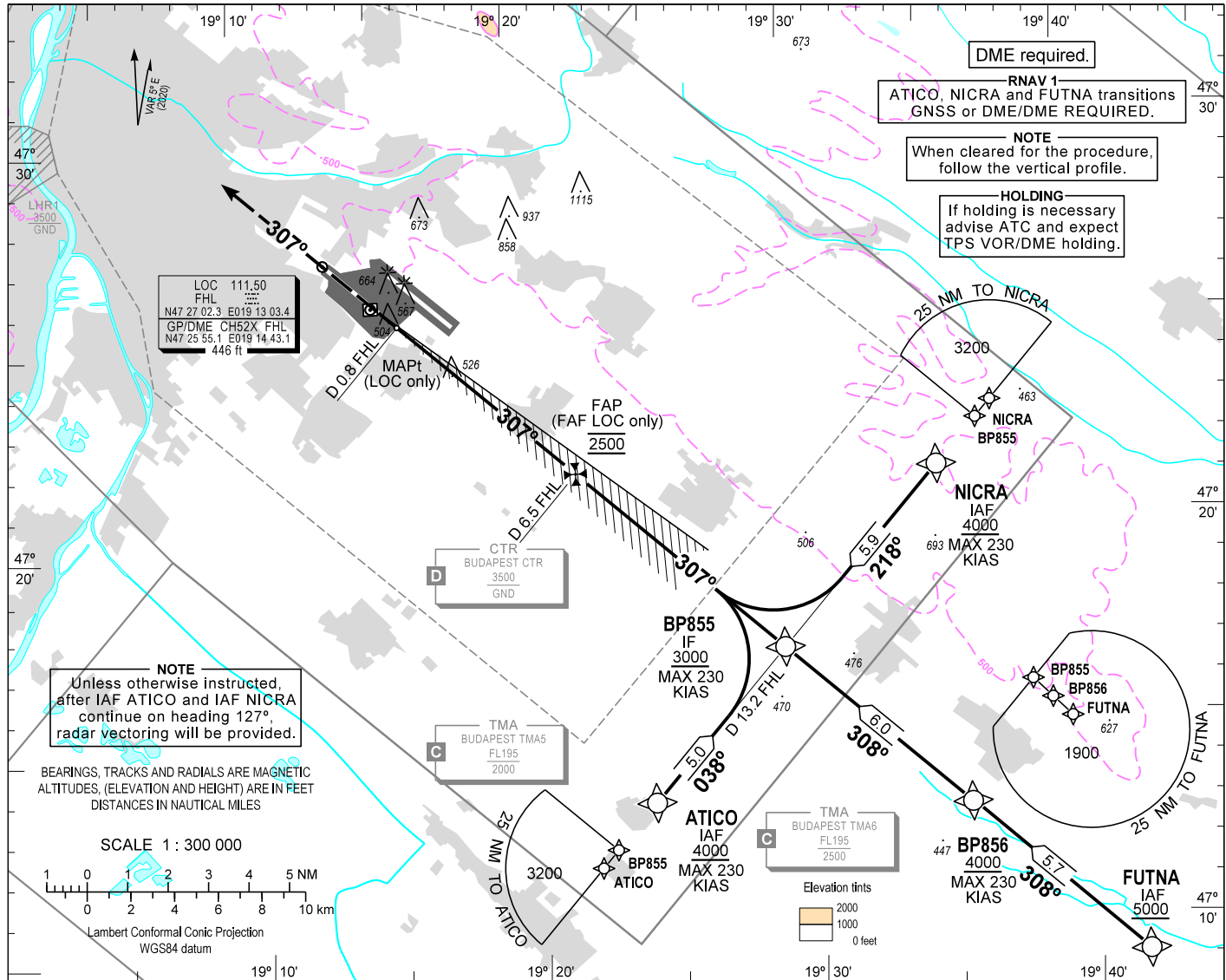
AIP HUNGARY

INSTRUMENT  
APPROACH  
CHART - ICAO

AERODROME ELEV 496  
HEIGHTS RELATED TO  
THR RWY 31L - ELEV 448

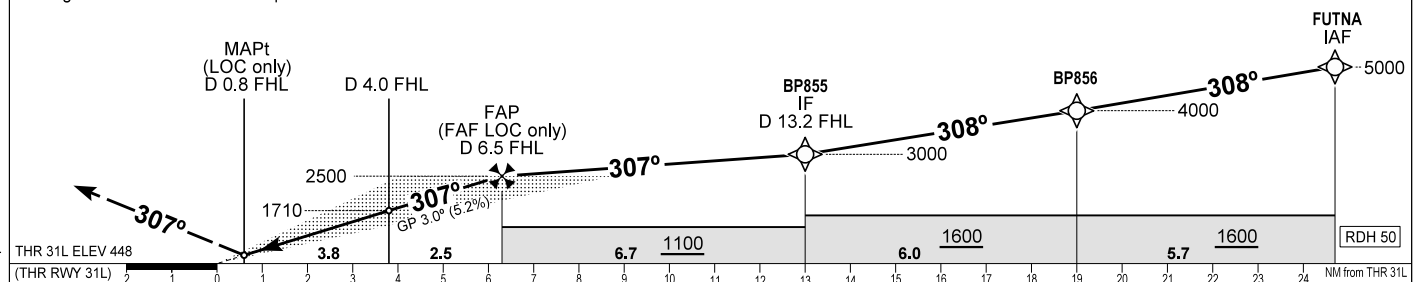
BUDAPEST APP 122.980 123.860 BUDAPEST GROUND 121.905  
BUDAPEST TOWER 118.715 BUDAPEST DELIVERY 134.540  
BUDAPEST INFORMATION (NORTH) 119.350, (NORTH-EAST) 134.855

BUDAPEST/LISZT FERENC  
ILS or LOC RWY 31L  
(ACFT CAT A, B, C, D)



MISSED APPROACH  
Climb on RWY heading to 3000. Expect radar vectors.  
RCF: follow missed approach procedure and at D 10.0 NM from FHL on heading 307°  
turn right to TPS VOR and hold as published on AD 2-LHBP-VOR-31R - 1 chart.

TRANSITION ALTITUDE  
10000



OCA (H)		A	B	C	D	DME FHL					
STRAIGHT-IN APPROACH	CAT I magc 2.5%	817 (369)	829 (381)	837 (389)	848 (400)	NM					
	CAT I magc 3.2%	635 (187)	647 (199)	655 (207)	666 (218)	NM					
	CAT II magc 2.5%	729 (281)	746 (298)	758 (310)	772 (324)	ft					
	CAT II magc 3.2%	547 (99)	564 (116)	576 (128)	590 (142)	ft					
	LOC	820 (380)	840 (400)	860 (420)		ft					
Timing not authorized to define the MAPt.						kt					
GS						min:sec					
FAP/FAF - THR 31L (6.3 NM)						ft/min					
Rate of descent (319 ft/NM)											

AD 2 LHBP INSTRUMENT APPROACH CHART ILS OR LOC RWY 31L

via FUTNA

PT	WP ID	Role	OverFly	Bearing/ (Len Dur)	Turn Direction	Altitude (FT)	IAS (KT)	VRT ANG	NAV PERF
IF	FUTNA	IAF				+5000			RNAV1
TF	BP856			312.6 T/5.7 NM		+4000	-230		RNAV1
TF	BP855	IF		312.5 T/6.0 NM		+3000	-230		RNAV1
CF	BP854	FAF		312.4 T/6.7 NM		@2500			
CF	RW31L	LTP	Y	312.4 T/6.3 NM		+498		-3.0	
VM				312.4 T		@3000			

via ATICO

PT	WP ID	Role	OverFly	Bearing/ (Len Dur)	Turn Direction	Altitude (FT)	IAS (KT)	VRT ANG	NAV PERF
TF	ATICO	IAF				+4000	-230		RNAV1
TF	BP855	IF		042.5 T/5.0 NM		+3000	-230		RNAV1
CF	BP854	FAF		312.4 T/6.7 NM		@2500			
CF	RW31L	LTP	Y	312.4 T/6.3 NM		+498		-3.0	
VM				312.4 T		@3000			

via NICRA

PT	WP ID	Role	OverFly	Bearing/ (Len Dur)	Turn Direction	Altitude (FT)	IAS (KT)	VRT ANG	NAV PERF
TF	NICRA	IAF				+4000	-230		RNAV1
TF	BP855	IF		222.5T/5.9 NM		+3000	-230		RNAV1
CF	BP854	FAF		312.4 T/6.7 NM		@2500			
CF	RW31L	LTP	Y	312.4 T/6.3 NM		+498		-3.0	
VM				312.4 T		@3000			

WAYPOINT COORDINATES SEE: AD 2.22.